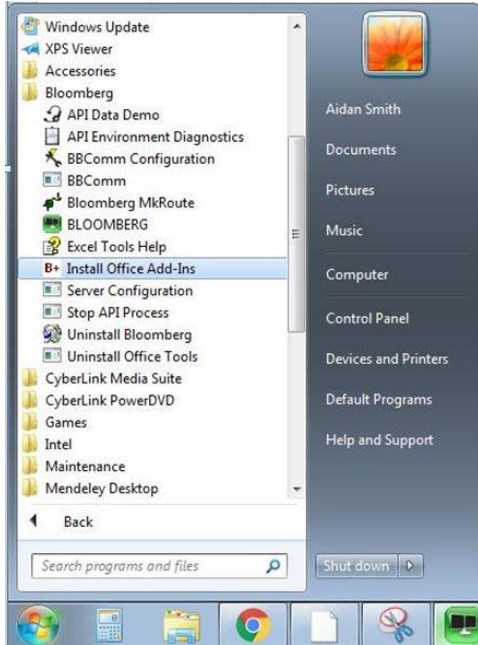


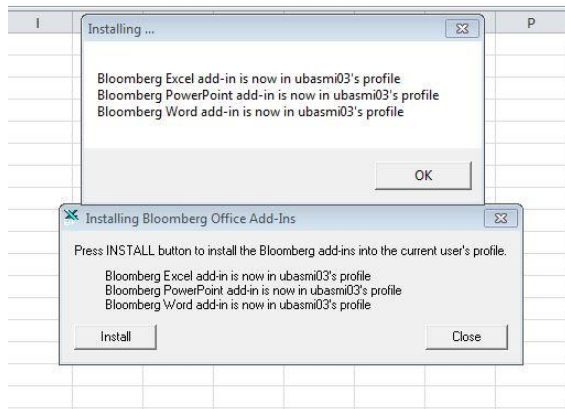
Installing the Bloomberg Excel add-on

You can install the Bloomberg add-on to Microsoft Excel, which is a good tool if you want to download data from Bloomberg to analyse it. You can do this by following these steps:

1. Click 'Start' , open the Bloomberg folder and click 'Install Office Add-Ins'



2. Click 'Install', then 'OK' in the box above it.



3. Close Excel and reopen it. Bloomberg will appear in the Excel ribbon. Note this will only work on the Bloomberg terminal.

