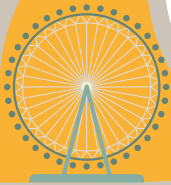


OPEN DAY SATURDAY 22 FEBRUARY

10am - 2.30pm

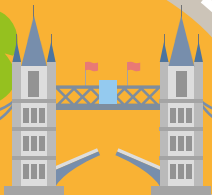


BLOOMSBURY WC1

**PROBLEM
SOLVED@**



Birkbeck
UNIVERSITY OF LONDON



WELCOME TO BIRKBECK

Our students often tell us that Birkbeck has changed their lives - whether they come to us from school, or - as many of our students do - as mature students, who want to give their careers a boost or fulfil a lifelong ambition.

We hope that today will be the start of a long and fulfilling relationship that you have with the College. Please use this open day to get to know our courses, campus and community.

We look forward to welcoming you again soon as a student.

Professor David Latchman
Master, Birkbeck



PLAN YOUR DAY

We have many activities on offer today that will help you decide whether studying at Birkbeck is right for you.

Have you:

- Spoken to somebody about the course you are interested in?
- Taken a campus tour?
- Learned about student finance?
- Met our current students?
- Found out how to apply?



Our Student Ambassadors, *Team Birkbeck*, will be on campus throughout the open day in their distinctive blue t-shirts. They will be more than happy to share their experiences of student life at Birkbeck with you. If you have a question, need some help or just fancy a chat, please don't hesitate to say hello.

Team Birkbeck will be leading **campus tours until 2pm**, leaving from the entrance to Malet Street, so you can see some of our facilities and the local area.

"I knew I wanted to further develop myself without giving up my day job. Birkbeck has been perfect in allowing me to work during the day and study in the evening."

Asmund Jenssen, BSc Economics

"As soon as I heard about how Birkbeck works as a university, I realised how suited it was to me. It's an incredibly supportive university with amazing disability support. They helped me feel fully prepared before I even started, which really helped with my confidence."

Rebecca White, BA History and Archaeology

PRESENTATION PLANNER

KEY Undergraduate Postgraduate General Combined UG & PG

GENERAL PRESENTATIONS	LENGTH	10.00	10.15	10.30	10.45	11.00	11.15	11.30	11.45	12.00	12.15	12.30	12.45	13.00	13.15	13.30	13.45	14.00	14.15	
Access and Engagement	30 mins					MAL B29														
Boost Your Career With BBK Futures	30 mins													MAL G16						
How Birkbeck Changed My Life - Alumni Q&A	60 mins							MAL B33												
Library	30 mins						MAL B36													
Student Finance	30 mins					MAL B34	MAL B34	MAL B34	MAL B34	MAL B34	MAL B34	MAL B34	MAL B34	MAL B34	MAL B34					
Students' Union	30 mins											MAL G16								
Welcome (Postgraduate)	30 mins	MAL B33		MAL B33																
Welcome (Undergraduate)	30 mins	MAL B34		MAL B34																
ACADEMIC PRESENTATIONS	LENGTH	10.00	10.15	10.30	10.45	11.00	11.15	11.30	11.45	12.00	12.15	12.30	12.45	13.00	13.15	13.30	13.45	14.00	14.15	
Applied Linguistics and Communication	30 mins	MAL G16															MAL G16			
Biological Sciences	30 mins						MAL B35			MAL 318/19										
Business and Management	30 mins							CLORE B01											CLORE B01	
Central Saint Martin's MBA	30 mins									MAL G16										
Computer Science	30 mins					CLORE B01											CLORE B01			
Counselling Courses	30 mins											MAL B35								
Criminology	30 mins		MAL B35																	
Culinary Industry Management	30 mins																MAL B33			
Culinary Innovation Management	30 mins													MAL B33						
Cultures and Languages	30 mins				MAL B36							MAL B36								
Earth and Planetary Sciences	75/30 mins											MAL 623A						MAL 623A		
Economics and Finance	30 mins	CLORE B01										CLORE B01								
English, Theatre and Creative Writing	30 mins		MAL B36								MAL B36									
Film, Media and Cultural Studies	30 mins							MAL B36										MAL B36		
Geography	30 mins			MAL G16		MAL G16														
Higher Education Certificates in Mathematics and Science	30 mins									MAL 318/19										
History, Classics and Archaeology	30 mins				MAL B35												MAL B36			
Law (Talk covers LLB and LLM Law)	30 mins											MAL B33								
Mathematics and Statistics (Postgraduate talk only covers Mathematics)	30 mins			CLORE B01										CLORE B01						
Philosophy	30 mins														MAL B36			MAL B33		
Politics and International Studies	30 mins							MAL G16										MAL G16		
Psychological Sciences	30 mins					MAL B33			MAL B35											
Psychosocial Studies	30 mins														MAL B35					

ACADEMIC DROP IN SESSIONS

Not all of our academic departments will have a dedicated presentation, however, you can still meet and talk to academic staff in drop in sessions which will take place between 10am - 2.30pm.

See the list below to find out where you can learn more about the subject you are interested in.

DEPARTMENT	WHERE TO FIND US
ACCOUNTING	Drop in at Clore 101
APPLIED LINGUISTICS AND COMMUNICATION	Drop in at Malet Street 539
ARTS MANAGEMENT	Drop in at Malet Street 631
BIOLOGICAL SCIENCES	Drop in at Malet Street B04
COMPUTER SCIENCE AND INFORMATION SYSTEMS	Drop in at Clore 204
COUNSELLING COURSES AND PSYCHOTHERAPY	Drop in at Malet Street 538
CRIMINOLOGY	Drop in at Malet Street B04
CULTURES AND LANGUAGES	Drop in at Malet Street 632

DEPARTMENT	WHERE TO FIND US
ECONOMICS, MATHEMATICS AND STATISTICS	Drop in at Clore 102
ENGLISH, THEATRE AND CREATIVE WRITING	Drop in at Malet Street 152
FILM, MEDIA AND CULTURAL STUDIES	Drop in at Malet Street 153
GENDER AND SEXUALITY	Drop in at Malet Street 624
GEOGRAPHY AND SOCIAL SCIENCES	Drop in at Malet Street 540
HISTORY OF ART	Drop in at Malet Street 631
HISTORY, CLASSICS AND ARCHAEOLOGY	Drop in at Malet Street 624
LAW	Drop in at Malet Street B04
MANAGEMENT & BUSINESS	Drop in at Clore 101
ORGANIZATIONAL PSYCHOLOGY	Drop in at Clore 203
PHILOSOPHY	Drop in at Malet Street 540
POLITICS AND INTERNATIONAL STUDIES	Drop in at Malet Street 539
PSYCHOLOGICAL SCIENCES	Drop in at Malet Street 351
PSYCHOSOCIAL STUDIES	Drop in at Malet Street 538

SUPPORT SERVICES DROP IN

All of our Support Services are located in Malet Street G13, G14 or G15 10am - 2.30pm. Some of our services are also presenting. Please refer to the Presentation Planner and see what presentations you would like to visit.

DEPARTMENT	WHAT
ACCESS AND ENGAGEMENT Drop in at Malet Street G13/14	The team focuses on Birkbeck's commitment to improving the access and success of non-traditional students in London. Our innovative and award-winning widening access provision helps potential students who would otherwise feel precluded from taking a step into higher education.
ACCOMMODATION Drop in at Malet Street G13/14	While most of our students live in private accommodation, we also offer student accommodation in partner halls.
ADMISSIONS Drop in at Malet Street G15	Our Admissions team can offer advice and guidance on the applications process.
BIRKBECK STUDENTS' UNION Drop in at Malet Street G13/14	With over 40 different student groups including sports clubs, societies and support networks, everyone can get involved while studying with us.
BOOST YOUR CAREER WITH BBK FUTURES Drop in at Malet Street G13/14	Futures is a one-stop service to support our students and graduates in their future lives. Go further in your career with our dedicated services to enhance your skills, develop a business idea and connect with employers for your next career step.
CAMPUS TOURS Entrance of Malet Street	Led by current students, these run between 10am - 2pm and will give you the chance to view our facilities and the local area.

DEPARTMENT	WHAT
HOW BIRKBECK CHANGED MY LIFE – ALUMNI PANEL Presentation at Malet Street B33 11.30 - 12.30	Our Alumni sharing their stories today: Jeremy Galea Operations and Building Maintenance Manager, Guy's and St Thomas' NHS Foundation Trust Pauline McCulloch Senior Membership Manager, Diabetes UK Siobhan Andrews Health and Wellness Coach Susy Moore Talent Development Specialist, Jump Trading <i>*Panellists may be subject to change.</i>
HOW TO APPLY Drop in at Malet Street G15	Our team will help you begin your application to Birkbeck, whether you are a part-time or full time, undergraduate or postgraduate student.
INTERNATIONAL STUDENTS Drop in at Malet Street G13/14	Birkbeck provides support and advice for students coming to study from overseas, ranging from helping you secure a visa to settling in the UK when you arrive.
LIBRARY SERVICES Drop in at Library entrance	Our library provides support, resources and facilities you need to make the most of your study time both on and off campus.
STUDENT ADVICE Drop in at Malet Street G13/14	We support our students throughout their studies with financial and pastoral help and advice, as well as offering information about applying to Birkbeck.
WELLBEING SERVICES Drop in at Malet Street G15	Birkbeck provides a comprehensive range of support and assistance for your studies, including a mental health advisory service, disability and dyslexia service and more. Our Disability Service Manager can talk to you about how Birkbeck can support you through your studies and help you to achieve your full potential.

WHY CHOOSE BIRKBECK



START YOUR CAREER BEFORE YOU GRADUATE

Birkbeck's teaching is in the evening from 6-9pm, giving students the flexibility to intern, volunteer, or further their career through work during the day.



BIRKBECK TALENT: CAREERS AND EMPLOYABILITY

Birkbeck Talent, our own in-house recruitment service, is one of the best. It has a long track record of linking students with employers, enabling students to gain valuable work experience while they study.



A REPUTATION FOR OUTSTANDING TEACHING

We have a reputation for excellent teaching and an outstanding record in supporting learning. Our teaching has been recognised by the government through a silver Teaching Excellence Framework (TEF) award.



OUTSTANDING SUPPORT SERVICES

Whether you're joining Birkbeck from school or college or another university, or returning to education after a break, the transition can be challenging. Our student services are experienced and have a great track record in supporting one of the UK's most diverse student populations.



HIGHEST GRADUATE SALARIES

At Birkbeck you will be surrounded by committed and enthusiastic students. Our graduates are among the highest paid in the UK (LEO 2019 data).

PRESTIGIOUS UNIVERSITY OF LONDON DEGREE

With a global reputation for high-quality research and teaching, Birkbeck is part of one of the world's most prestigious universities - the University of London, from which you will gain your qualification.



UNIVERSITY OF LONDON FACILITIES

Our students have access to all University of London facilities, plus free membership of Student Central, which offers a huge range of sports and social activities.



STUDY IN THE HEART OF LONDON

Our main campus is in Bloomsbury, the knowledge quarter at the heart of the world's most international and cosmopolitan city. Everything London has to offer is on our doorstep: we are near King's Cross, Soho and Covent Garden as well as some of the world's best galleries and museums, theatres, music venues, shops, bars and restaurants.



RESEARCH EXCELLENCE

Birkbeck is renowned for its inspiring research and is one of the world's leading research universities, with an intellectually-challenging research culture across all disciplines.



FLEXIBLE PAYMENT OPTIONS

We understand that living in London is expensive. We offer flexible payment options to allow you to spread the cost of your fees across the year, at no additional cost.



FIND US

EVENING STUDY THAT FITS INTO YOUR LIFE



NEAREST TUBE STATIONS

Russell Square, Goodge St, Tottenham Court Road, King's Cross/St Pancras and Euston.

CAMPUS

Our main building is at Malet Street (1) next to Torrington Square. This is where the open day will take place, along with the Clore Management Centre (2) for subjects from the School of Business, Economics and Informatics.

The map also shows the other buildings (3-7) used by Birkbeck that you may have your seminars and lectures in.