

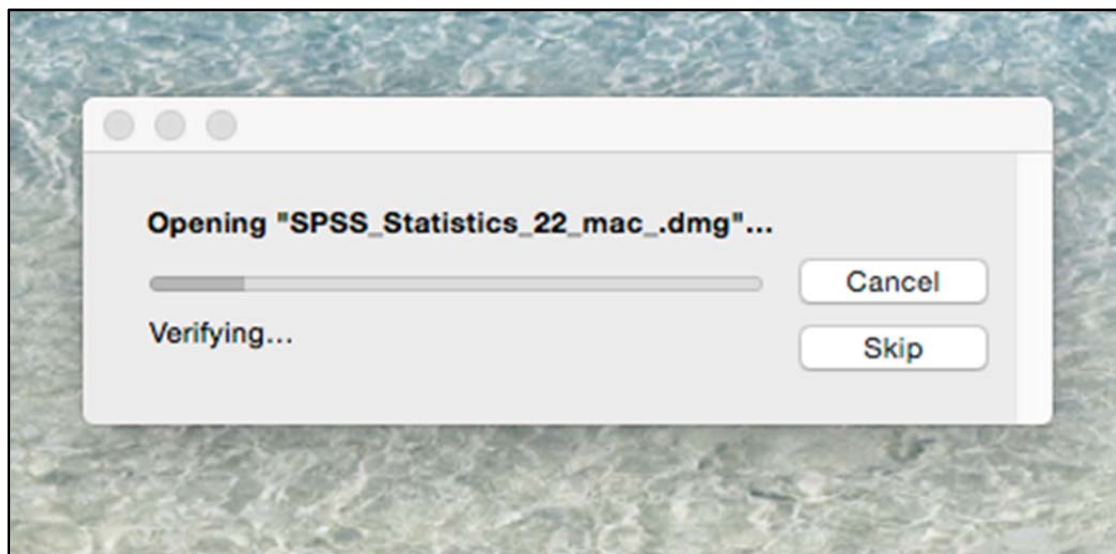
Installing IBM SPSS 22 for MAC OS

Download the file from the link below:

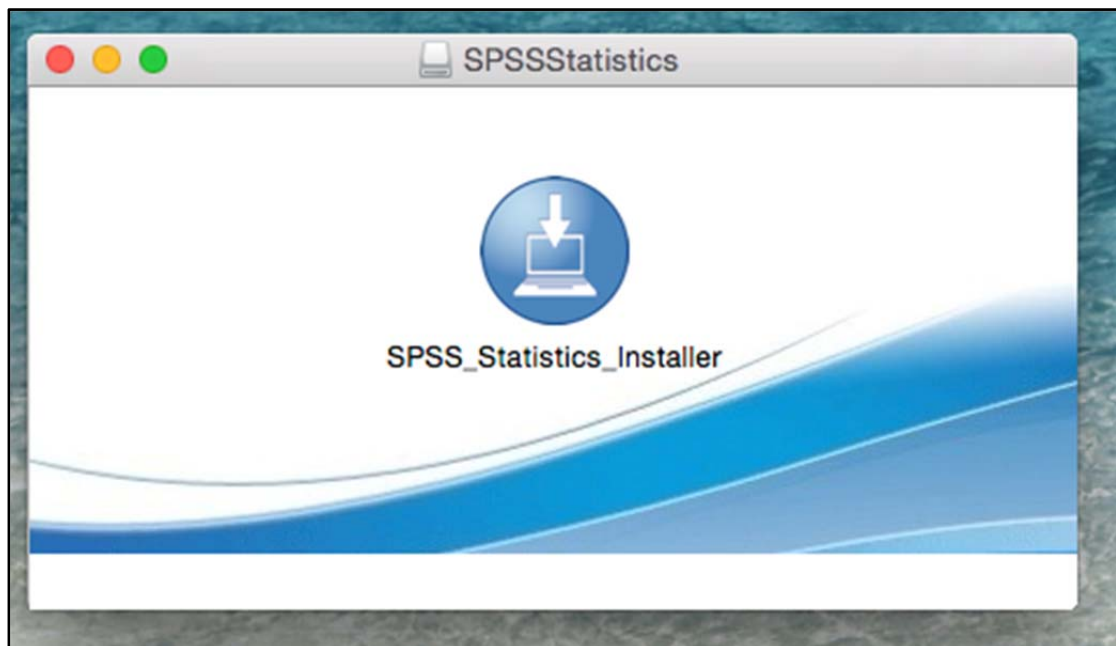
<http://www.bbk.ac.uk/its/help/software/downloads/SPSSinstall>

Installation instructions

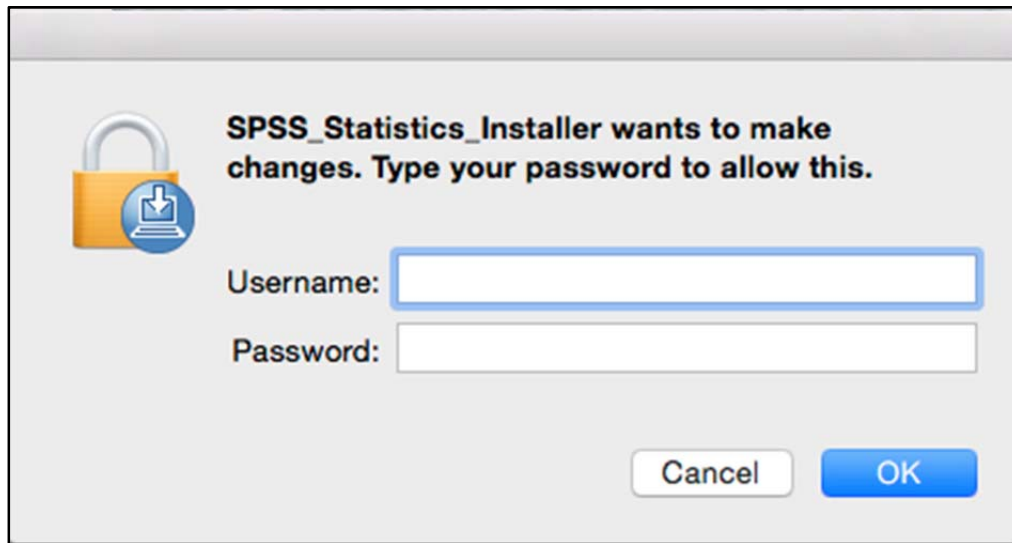
1. Click the file SPSS_Statistics_22_mac_.dmg in the **Downloads** folder.



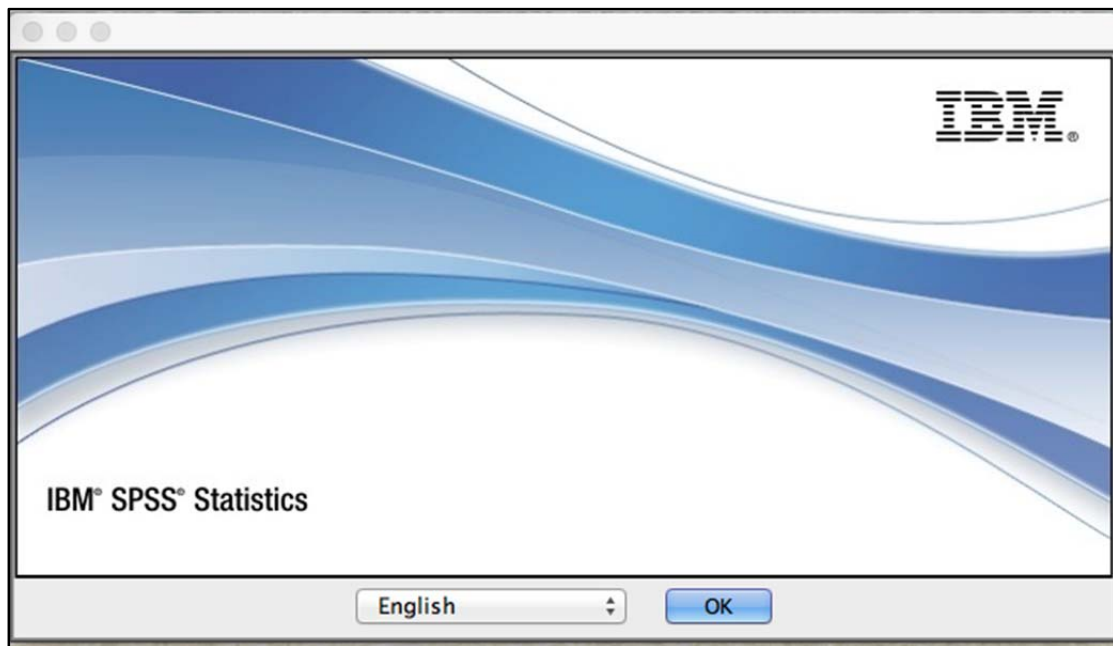
2. Double-click the **SPSS Statistics Installer** icon on your desktop.



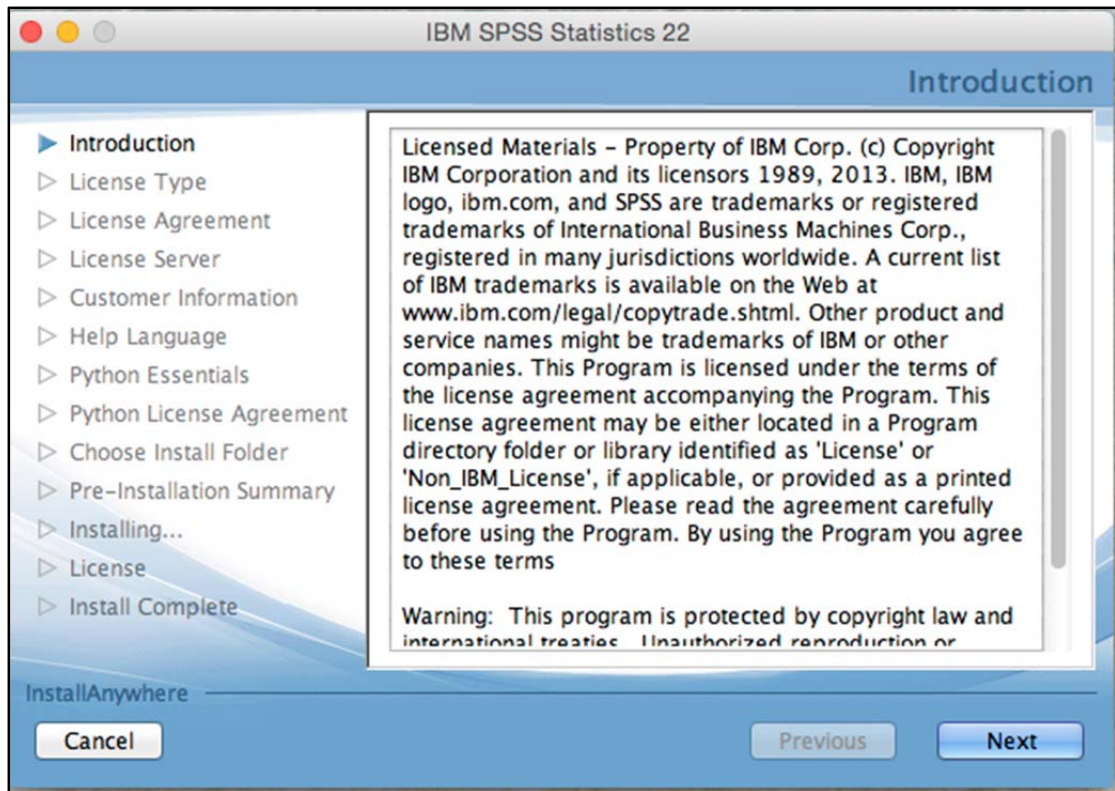
3. You need to authorise the installer.
Type in your username and password of your MAC.



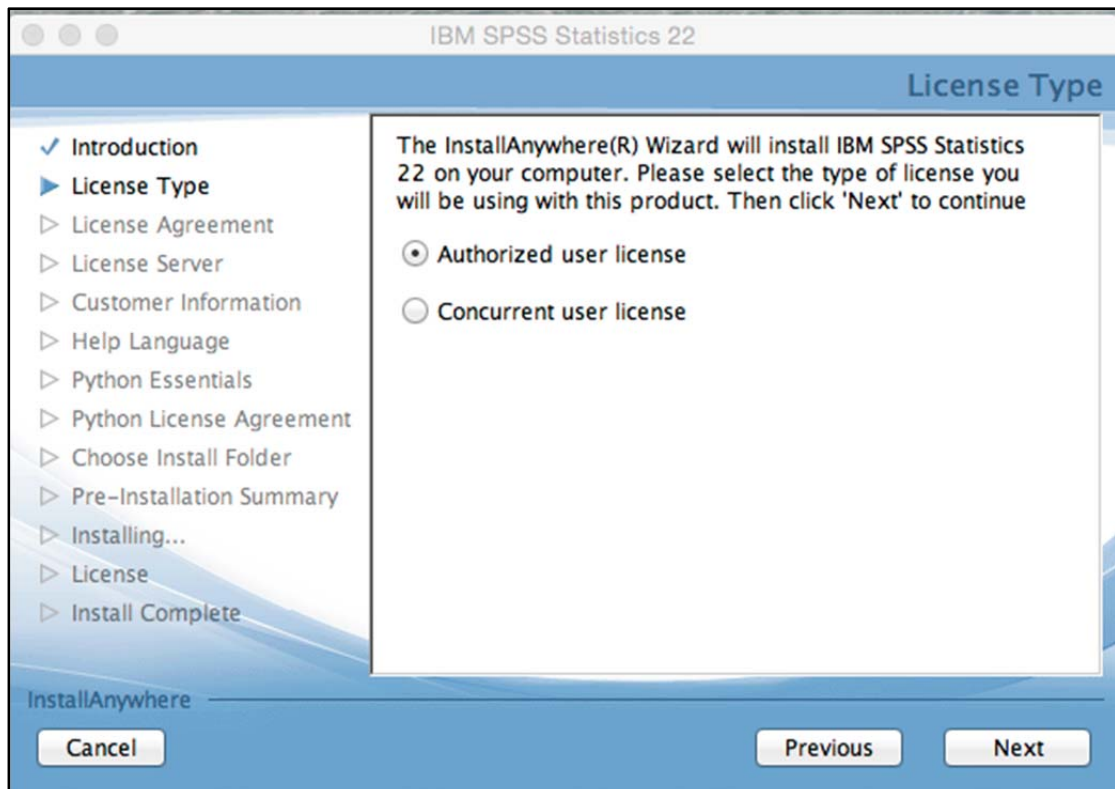
4. On the **IBM SPSS Statistics** screen, click **OK**.



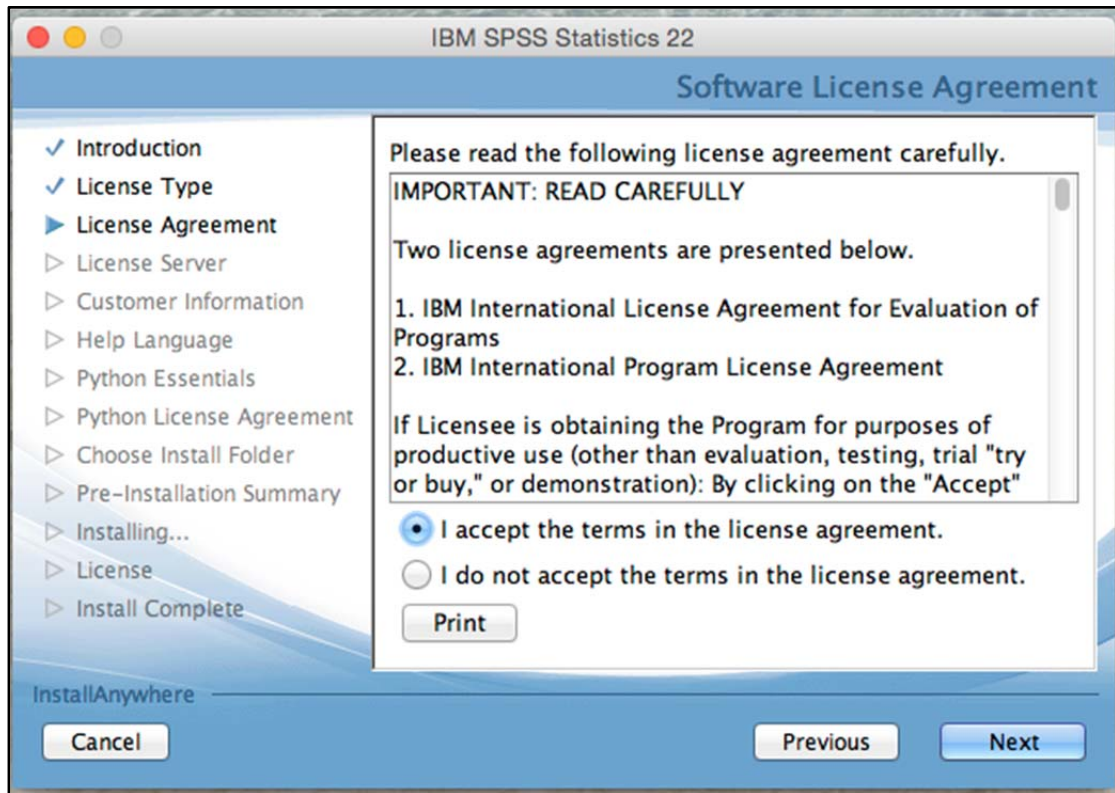
5. On the **IBM SPSS Statistics 22 – Introduction** screen, click **Next**.



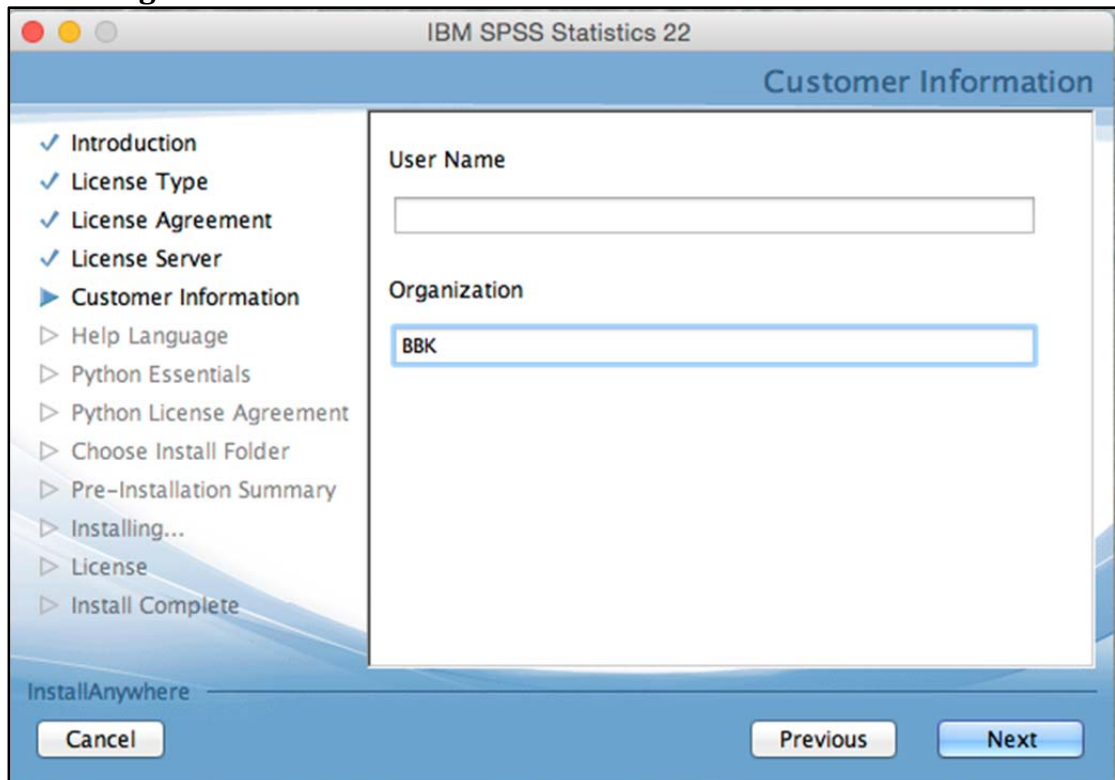
6. On the **IBM SPSS Statistics 22 – License type** screen, choose **Authorized user license**, then click **Next**.



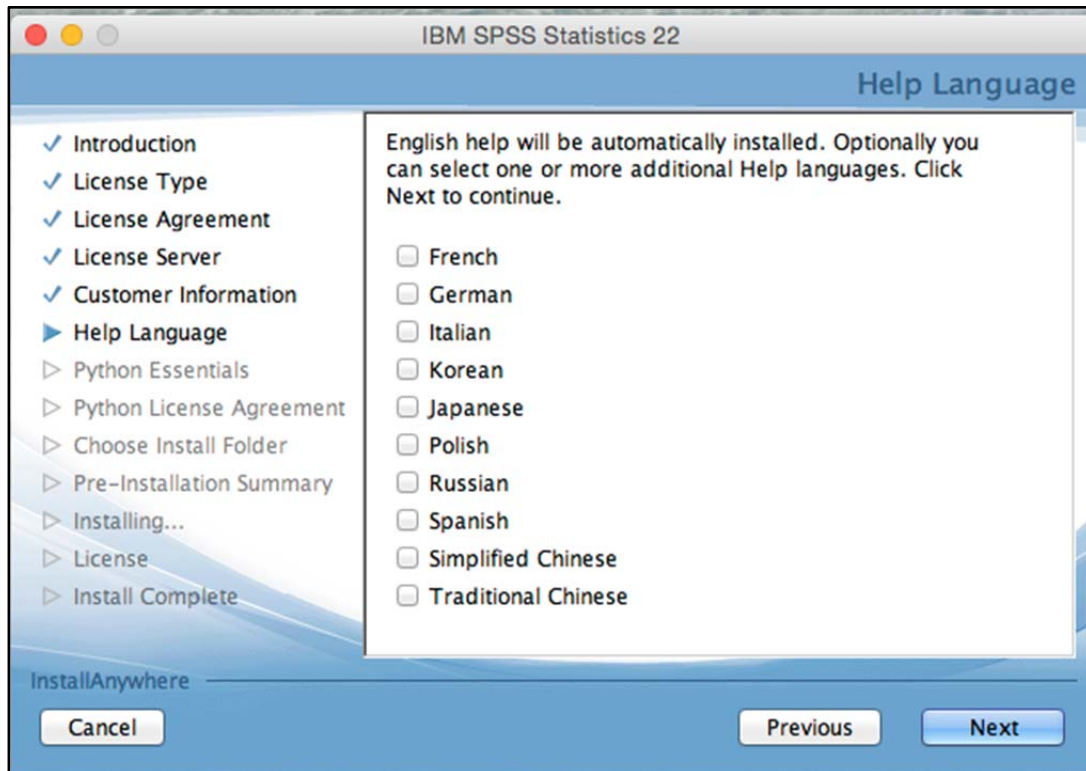
7. On the **IBM SPSS Statistics 22 – Software License Agreement** screen, select **I accept the terms in the license agreement** and click **Next**.



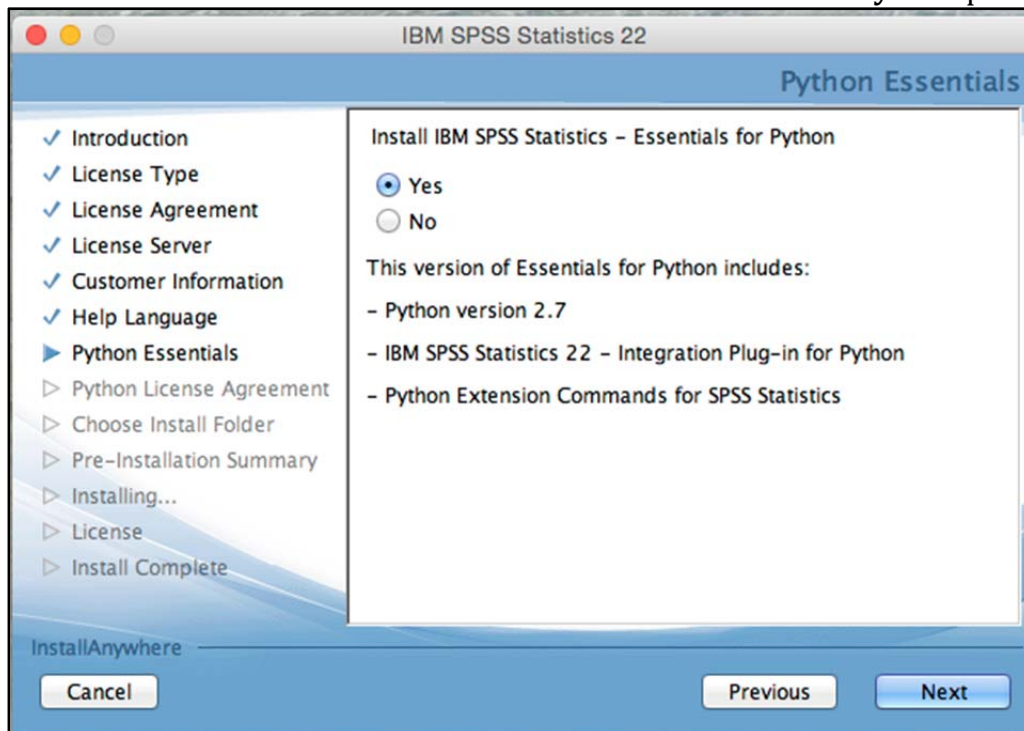
8. On the **IBM SPSS Statistics 22 – Customer Information** screen, enter your BBK username in the **User Name** field. Type BBK in the **Organization** field. Click **Next**.



9. On the **IBM SPSS Statistics 22 – Help Language** screen, select any languages you would like installed for SPSS Help and then click **Next**.

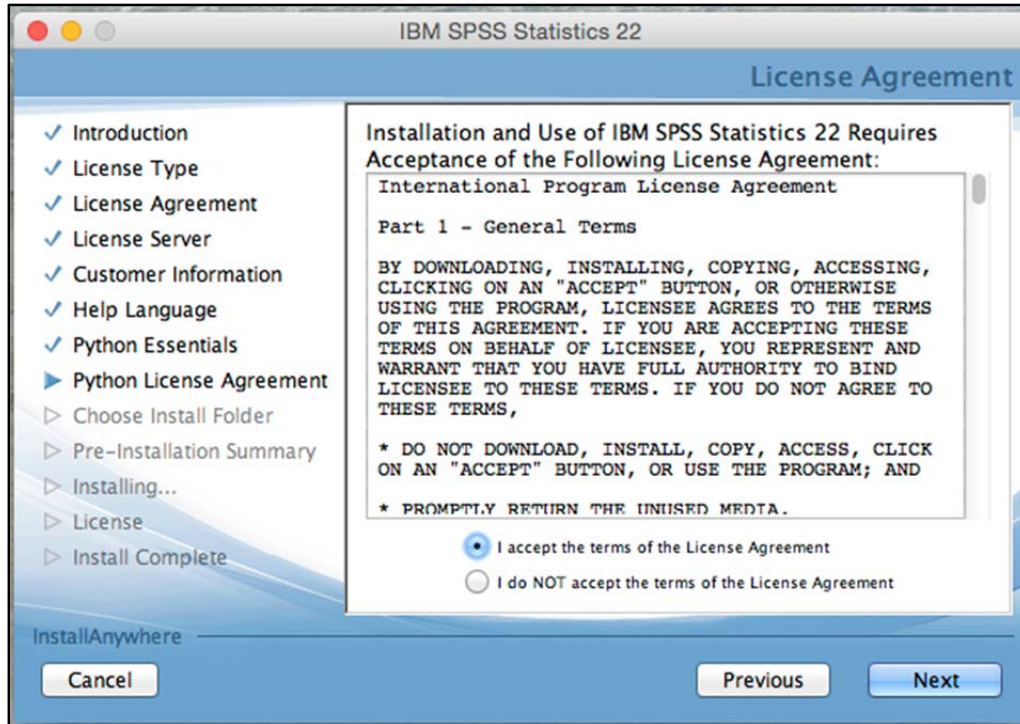


10. On the **IBM SPSS Statistics 22 – Install Python Essentials** screen, you can choose whether or not to install the **Essentials for Python** package.

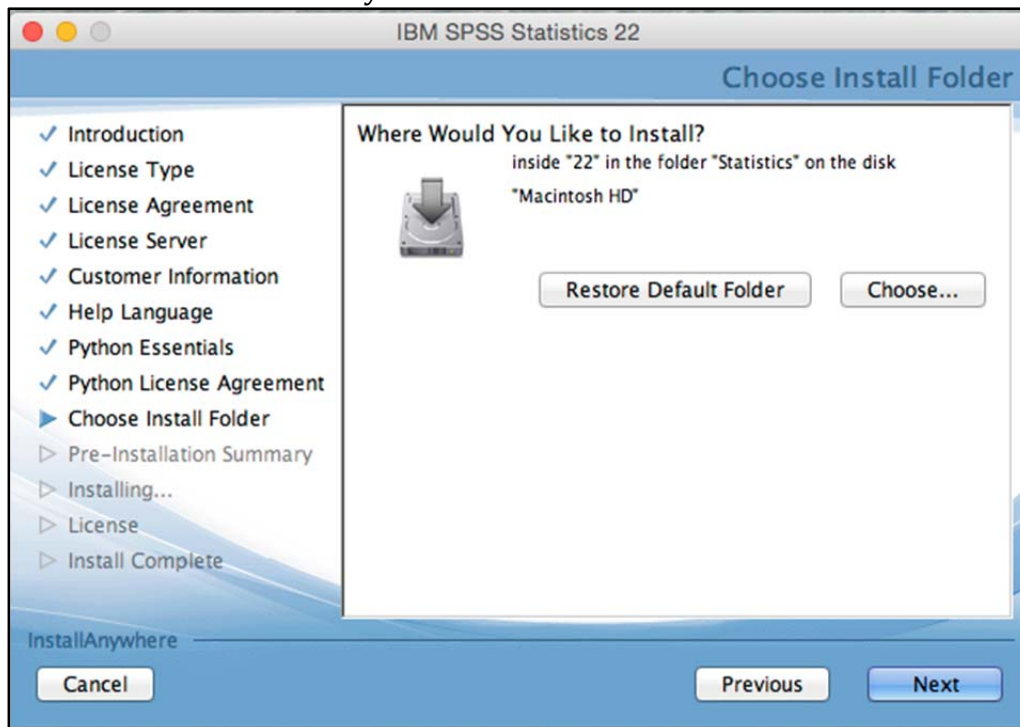


If you choose to install Essentials for Python, the following license agreement screen will appear. Select **I accept these terms of the license Agreement** and click **Next** to continue with the installation.

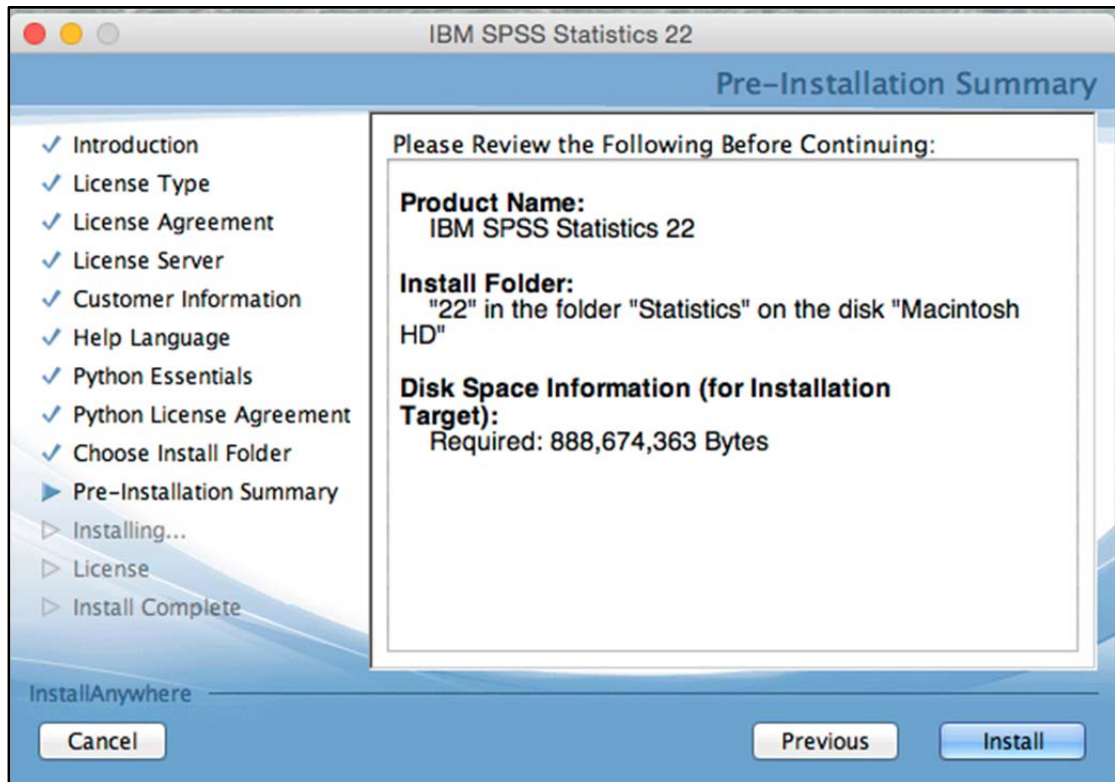
If you choose **[NO]** not to **Install Python Essentials**, go to point 11.



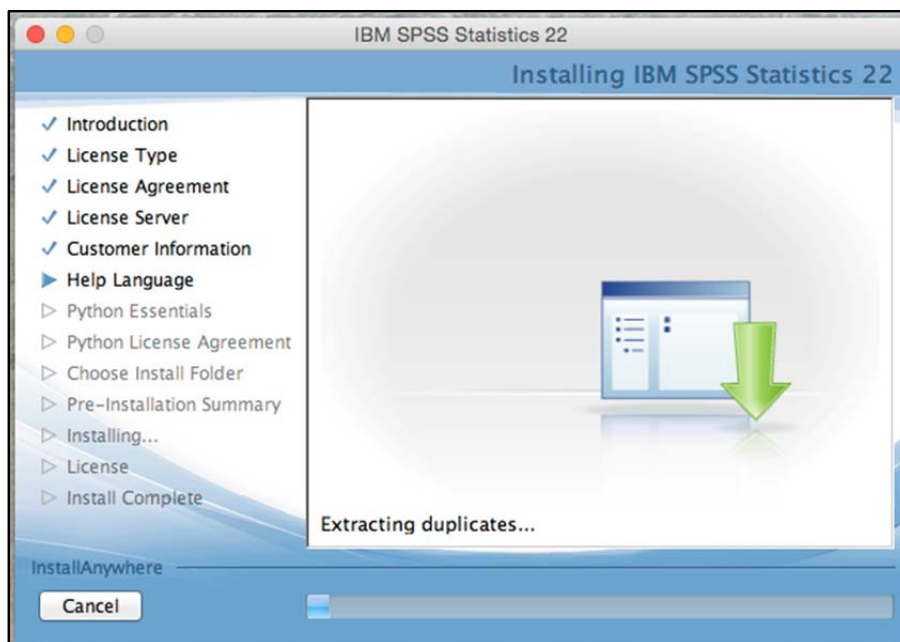
11. On the **IBM SPSS Statistics 22 – Choose Install Folder** screen, choose the location where you would like to install SPSS. Click **Next**.



12. On the **IBM SPSS Statistics 22 – Pre-Installation Summary** screen, click **Install**.



13. SPSS will now install. This process takes approximately 5 – 10 minutes and it depends on the specification of your equipment.

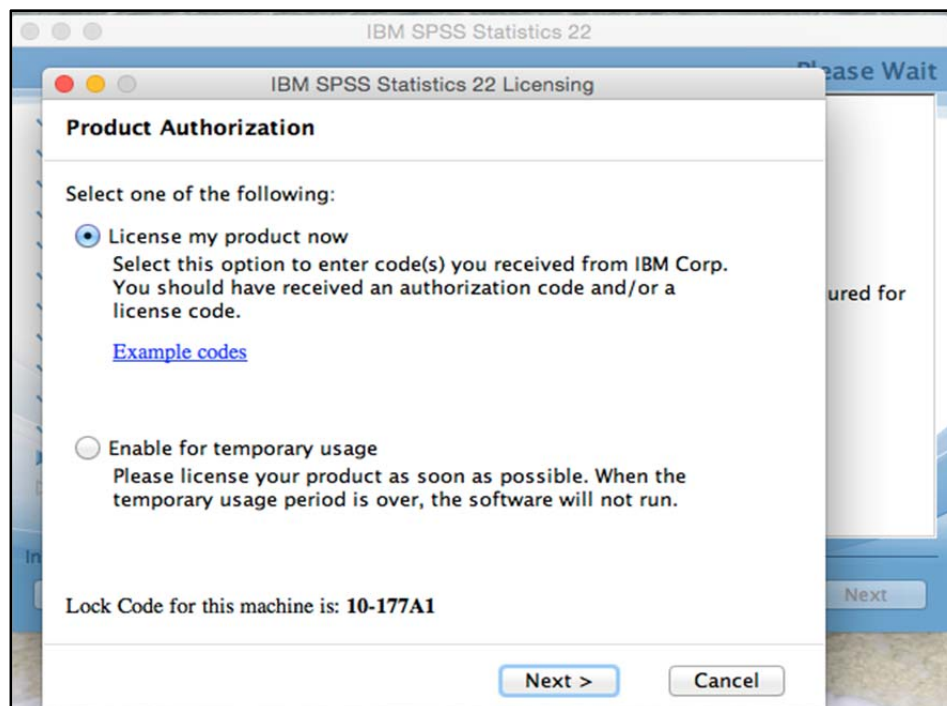


14. On the **IBM SPSS Statistics 22 – License** screen, click **Done** to start the license authorization process.

Note: You must be connected to the Internet to successfully complete the authorization process.

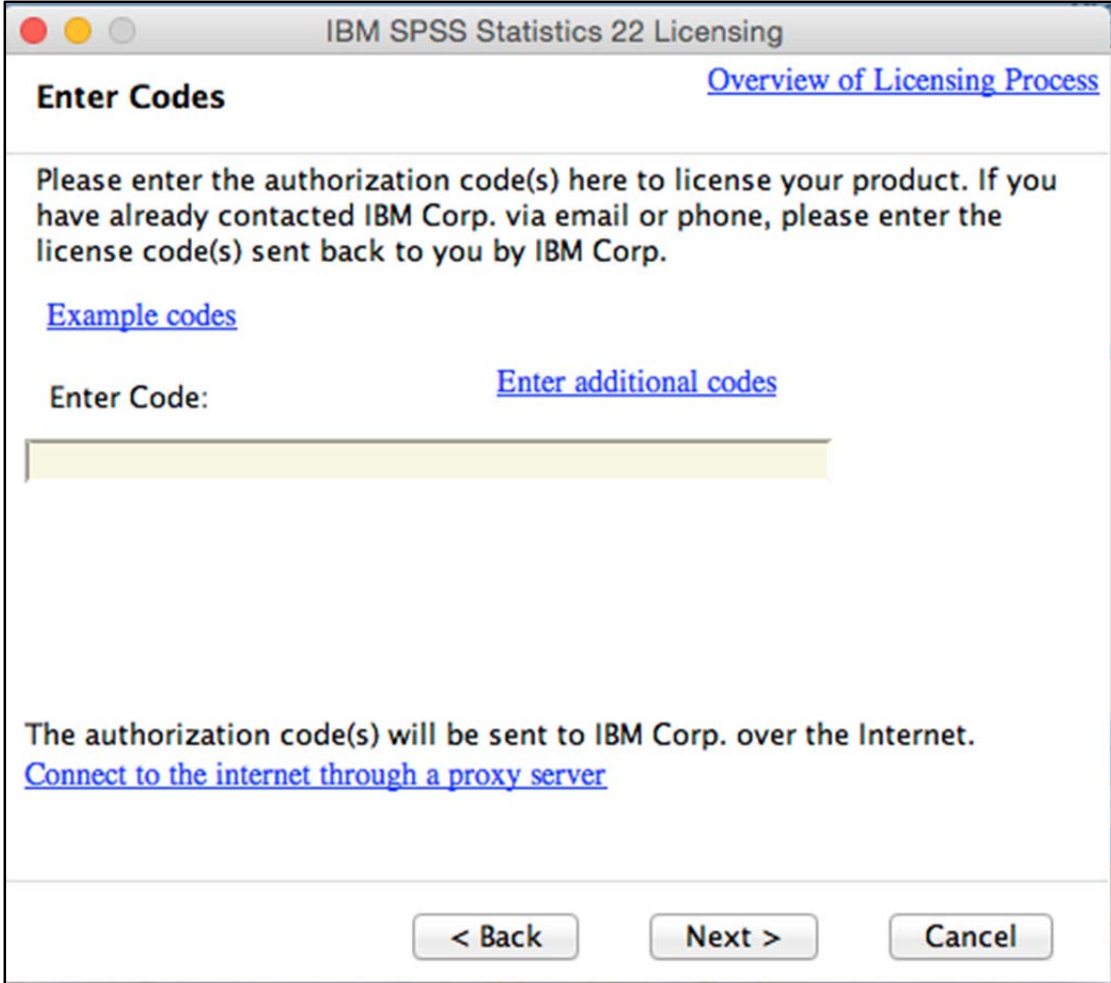


15. On the **Product Authorization** screen, choose **License my product now**. Click **Next**.



16. On the **Enter Codes** screen, enter your authorization code. If you can obtain the codes from the link below:

http://www.bbk.ac.uk/its/help/software/downloads/spss_codes



The image shows a dialog box titled "IBM SPSS Statistics 22 Licensing". The window has a standard macOS-style title bar with red, yellow, and grey buttons. The main content area is titled "Enter Codes" and includes a link to "Overview of Licensing Process". The text instructs the user to enter authorization codes and provides a link for "Example codes". There is a text input field with a yellow highlight and a link for "Enter additional codes". At the bottom, there is a note about internet connectivity and a link for "Connect to the internet through a proxy server". The dialog box has three buttons: "< Back", "Next >", and "Cancel".

IBM SPSS Statistics 22 Licensing

Enter Codes [Overview of Licensing Process](#)

Please enter the authorization code(s) here to license your product. If you have already contacted IBM Corp. via email or phone, please enter the license code(s) sent back to you by IBM Corp.

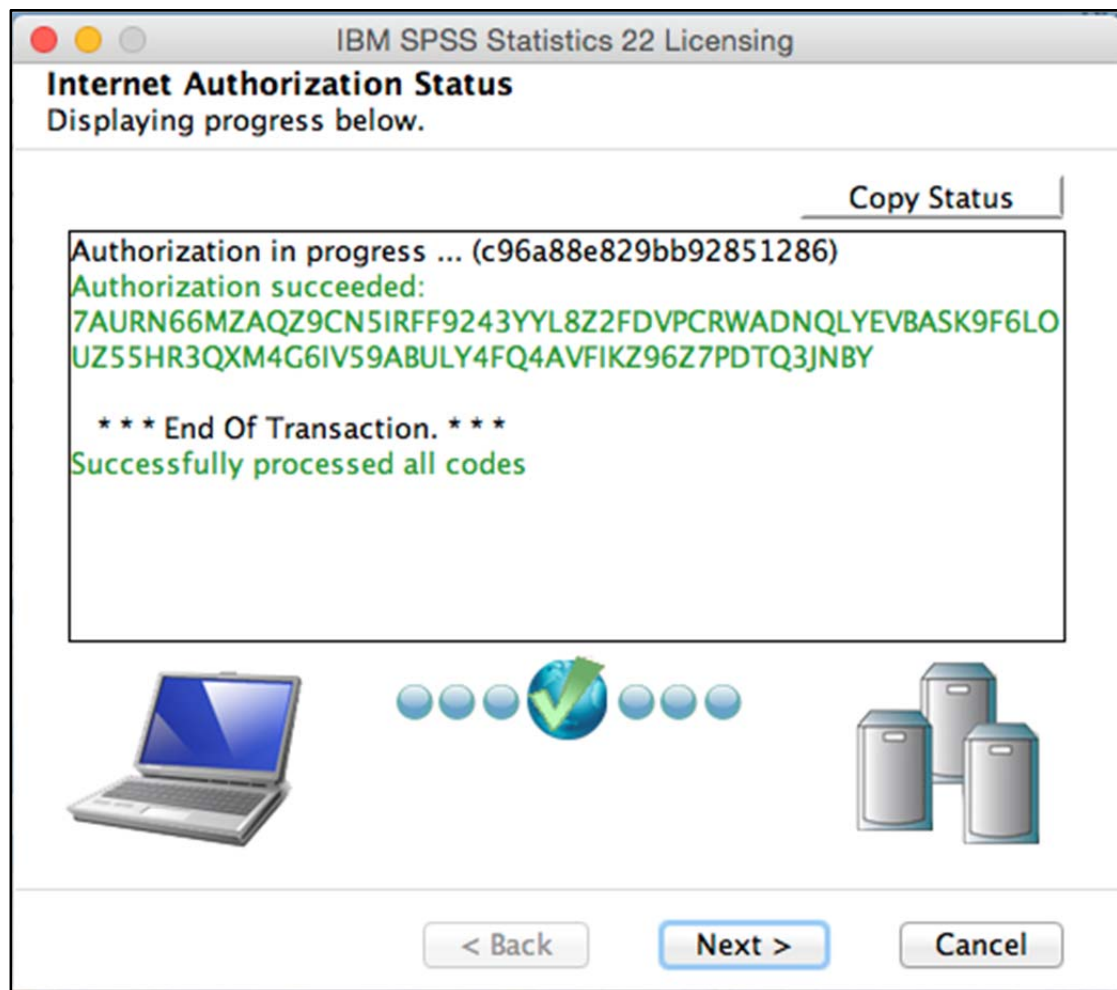
[Example codes](#)

Enter Code: [Enter additional codes](#)

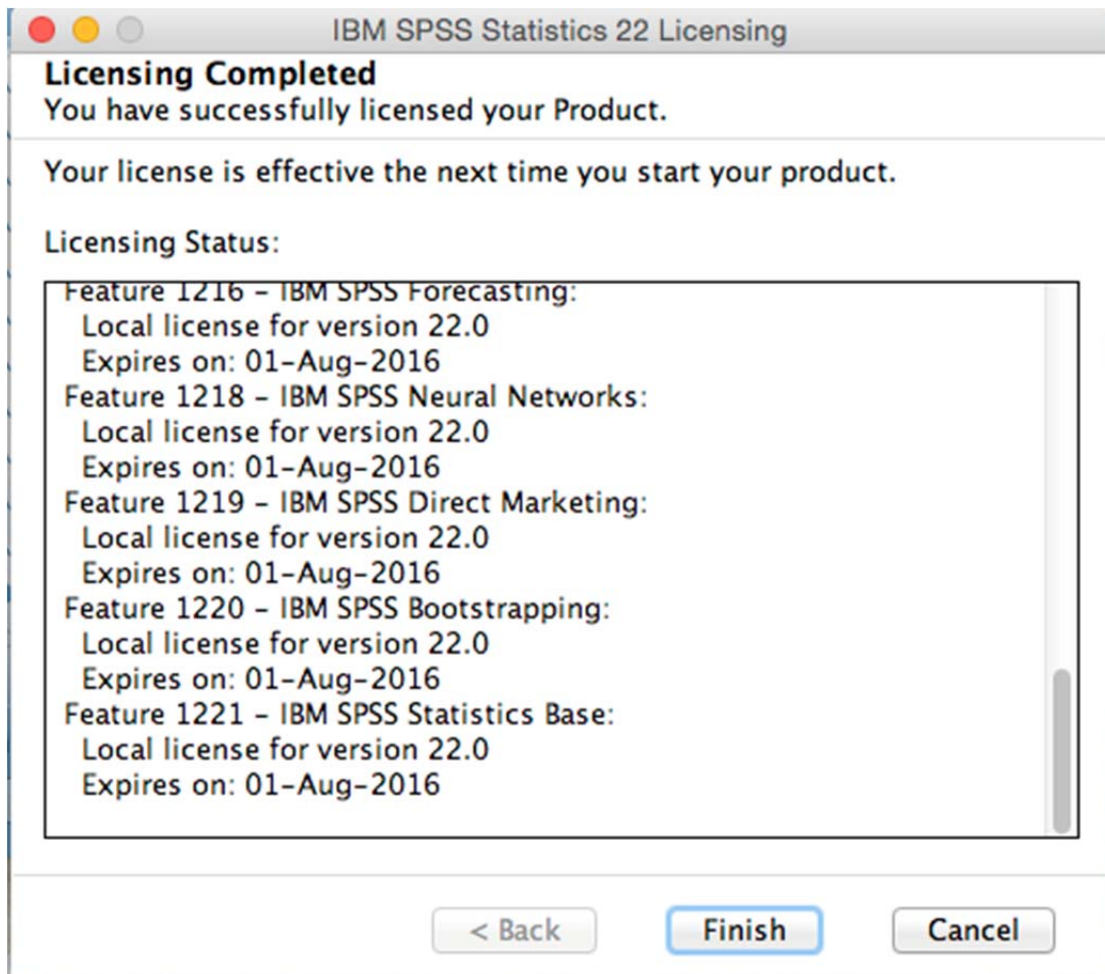
The authorization code(s) will be sent to IBM Corp. over the Internet.
[Connect to the internet through a proxy server](#)

< Back Next > Cancel

17. Once the authorization process is complete on the **Internet Authorization Status** screen, click **Next**.



18. On the **Licensing Completed** screen, click **Finish** to complete the installation.



Note: Before starting SPSS you need to install the SPSS patch (fix file)
The file you need is SPSS_Statistics_22_mac_FP002.dmg and can be
downloaded from
<http://www.bbk.ac.uk/its/help/software/downloads/SPSSinstall>

When you start SPSS for the first time you may see a message that a firewall has blocked a component from operating - you should choose the option to override this blocking action.

Test SPSS by opening some data and running a statistical analysis, ensure you include a graph in the output to check the Java based graphics engine is working correctly.