

Nature in Towns and Cities

Prof. David Goode

Writers on urban wildlife

- Richard Jefferies: Nature near London 1893.
- W H Hudson: Birds in London 1898.
- Seton Gordon: Sea-gulls in London 1935.
- Max Nicholson : Bird watching in London (1927) 1995.
- Richard Fitter: London's Natural history 1945.
- John Kieran: Natural History of New York City 1959.

and a few more authors

- Richard Mabey: The unofficial countryside 1973
- John Burton: The naturalist in London 1974
- Anne Whiston Spirn: the Granite Garden 1984
- David Goode: Wild in London 1986
- Jim Dickson: Wild plants of Glasgow 1991
- Lesley Day: Field Guide to the Natural World of New York City 2007
- John Sparks: Nature in cities and islands 1976
- Richard Mabey: Weeds 2010

Landscape design and urban ecology

- Anne Whiston Spirn: the Granite Garden 1984
- Oliver Gilbert: The Ecology of Urban Habitats 1989
- Stephen Harris and Phil Baker: Urban Foxes 2001.

Natural habitats within towns and cities

Encapsulated countryside

Unofficial wild

ENCAPSULATED COUNTRYSIDE

Woodlands

Heathlands

Meadows

Wetlands

Hills and crags

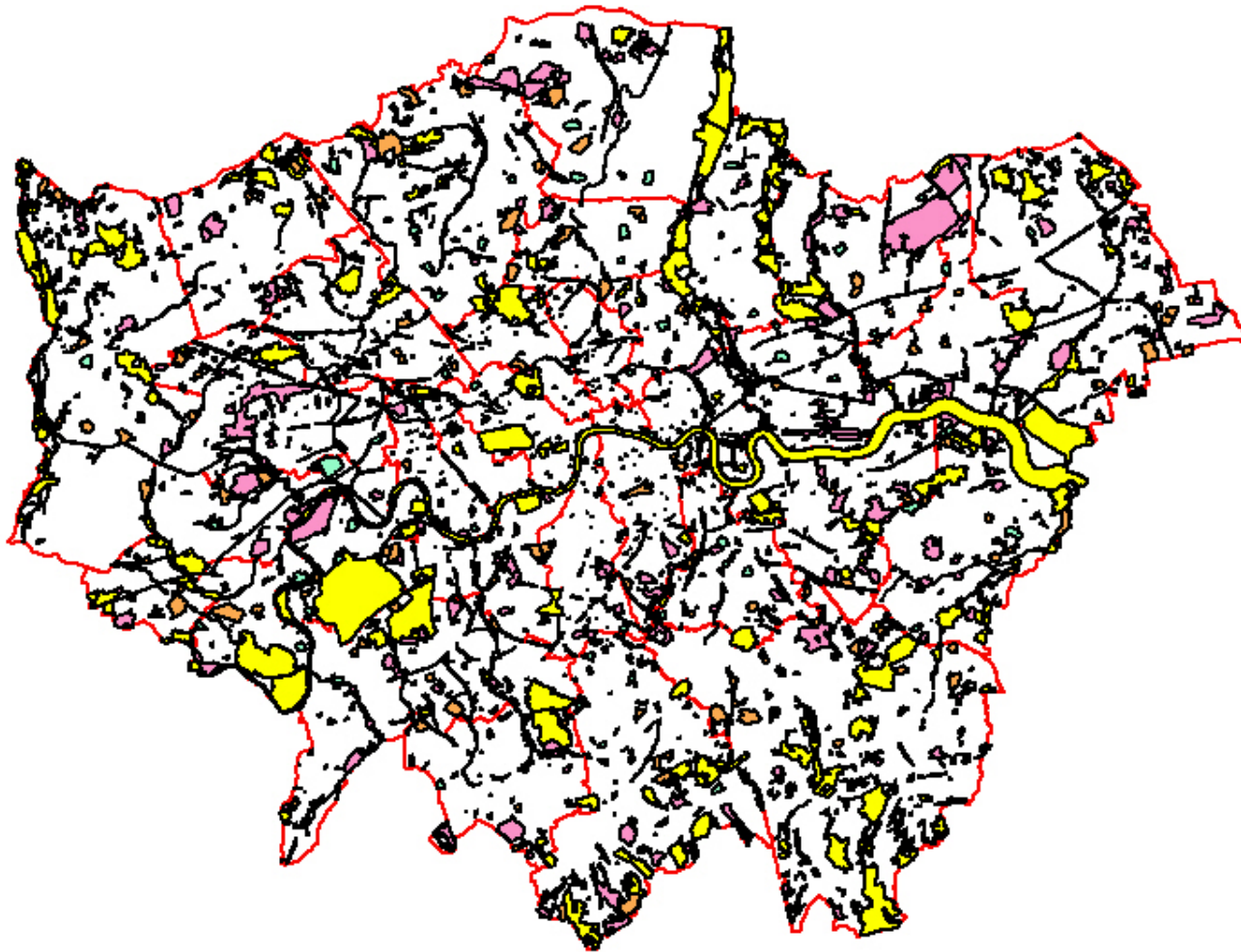
UNOFFICIAL WILD

- Railwaysides
- Cemeteries
- Derelict industrial sites
- Waterworks and sewage farms
- Reservoirs
- Parks and botanic gardens
- Private gardens
- Colonisers

A few of the many incomers to towns and cities

- Peregrine falcons
- Roof nesting gulls
- Mediterranean Gull
- Terns
- Scavengers
- Spiders
- Parakeets

Sites of Nature Conservation Importance in London



Local Nature reserves

ECOLOGY PARKS

- New habitats for public enjoyment of nature and for environmental education

CREATING EXTENSIVE NEW HABITATS

London Wetland Centre

- Created to replace a redundant reservoir in the late 1990's, and opened in 2000, the Centre is one of the most impressive wetland conservation projects in the UK.
- Situated only four miles from the centre of London it covers 105 acres and includes a visitor centre and triple-decker hides for viewing the wildlife.
- It was designated a Site of Special Scientific Interest in 2002 because of the number of over-wintering Gadwall and Shoveler duck.

NATURE IN THE BUILT ENVIRONMENT

The London Biodiversity Action Plan

Habitat Action Plans

- Woodland
- Chalk Grassland
- Heathland
- Wasteland
- Acid Grassland
- Tidal Thames
- Canals
- Churchyards and Cemeteries
- Private Gardens
- Parks, Squares and amenity grassland

Species Action Plans

- Bats
- Water Vole
- Grey Heron
- Peregrine
- Sand Martin
- Black Redstart
- House Sparrow
- Stag Beetle
- Tower Mustard
- Mistletoe
- Reptiles
- Black Poplar