

*Universities and their local labour
markets: the cases of
Oxfordshire and
Buckinghamshire*

Rupert Waters

and

Helen Lawton Smith

Universities in policy

[LEPs] should forge stronger partnerships with local authorities to drive improvements in infrastructure, economic regeneration, skills, exports, and inward investment. All universities within a LEP area should be represented

Adonis Review, July 2014

The Government also fully agrees with Lord Heseltine that business and universities should have closer engagement to ensure courses are relevant and build employability skills. It is important for businesses and higher education institutions (HEIs) to take ownership and to develop collaboration in ways that best suit local skills priorities and characteristics

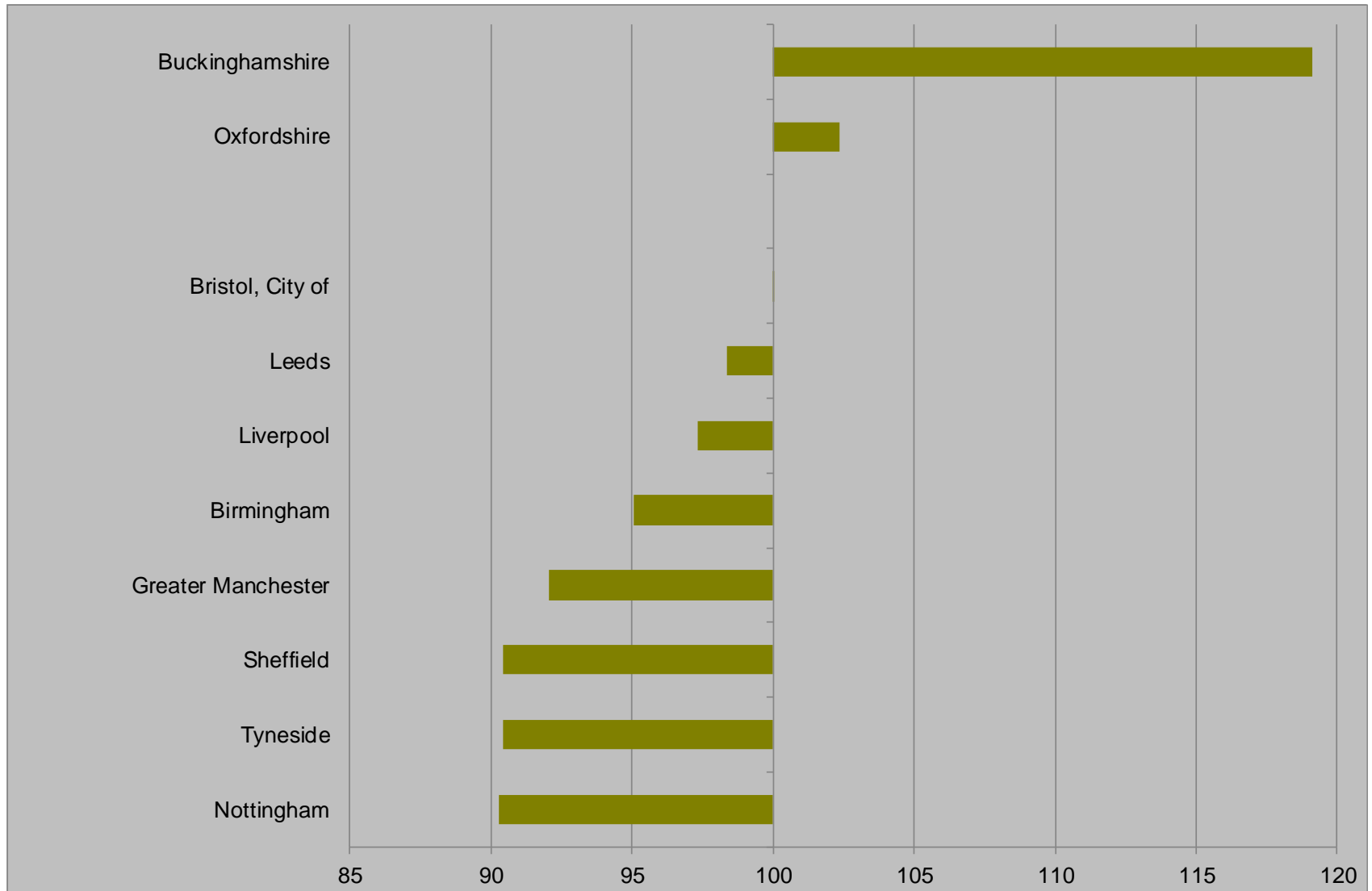
HM Government (2013) Response to Heseltine

Similarities

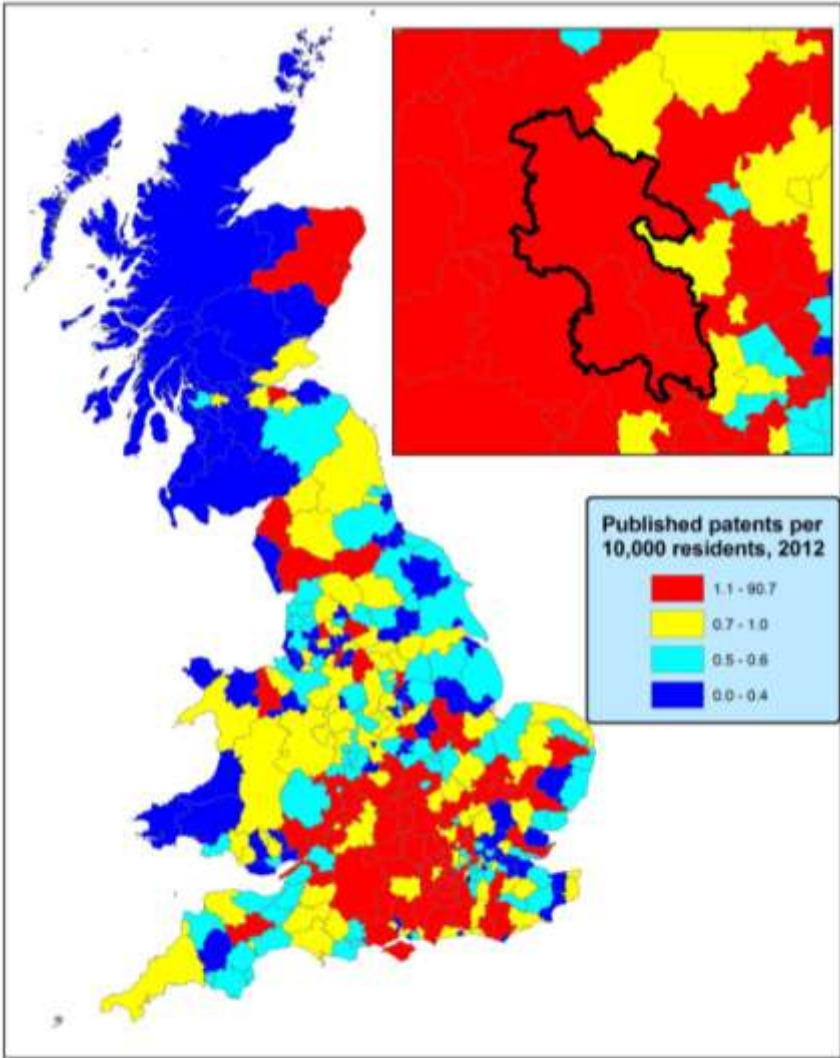
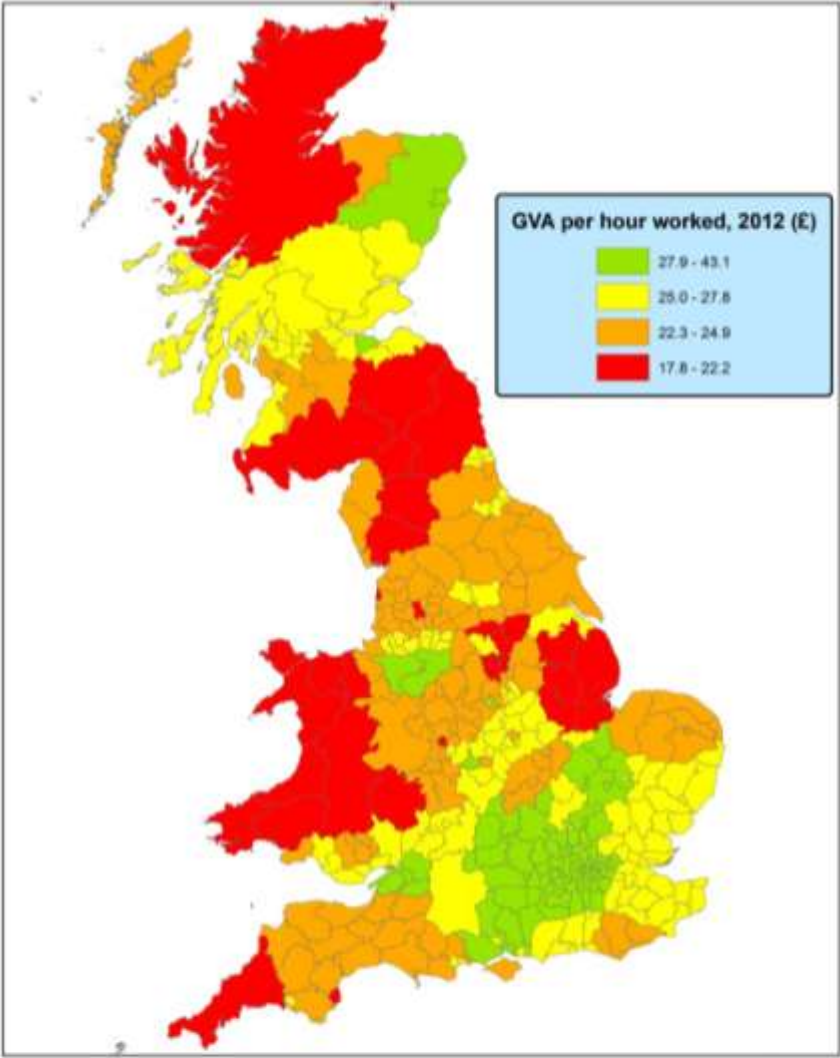
	All categories: Industry	A, B, D, E Agriculture, energy and water	C Manufacturing	F Construction	G, I Distribution, hotels and restaurants	H, J Transport and communication	K, L, M, N Financial, Real Estate, Professional and Administrative activities	O, P, Q Public administration, education and health	R, S, T, U Other
1. Managers, directors and senior officials	125.1	111.4	142.6	126.6	115.1	137.7	121.3	133.2	108.0
2. Professional	103.9	77.0	133.1	99.9	145.7	123.9	99.4	101.1	91.3
3. Associate professional and technical	110.5	110.2	142.9	89.9	145.5	130.7	100.1	97.6	102.0
4. Administrative and secretarial	96.6	131.4	127.2	107.6	120.1	93.6	95.4	83.3	91.4
5. Skilled trades	106.4	104.8	93.6	100.6	101.9	116.8	141.2	101.1	127.9
6. Caring, leisure and other service	100.7	161.2	89.1	64.0	89.1	87.7	92.5	107.8	102.9
7. Sales and customer service	87.4	73.5	118.3	75.7	88.5	63.8	79.7	71.7	83.0
8. Process, plant and machine operatives	74.1	91.4	57.1	83.4	83.6	67.7	84.9	92.5	99.5
9. Elementary	80.0	91.0	57.1	87.7	80.1	71.3	78.5	87.5	84.7

	All categories: Industry	A, B, D, E Agriculture, energy and water	C Manufacturing	F Construction	G, I Distribution, hotels and restaurants	H, J Transport and communication	K, L, M, N Financial, Real Estate, Professional and Administrative activities	O, P, Q Public administration, education and health	R, S, T, U Other
1. Managers, directors and senior officials	106.3	125.2	107.9	100.4	107.0	131.4	99.3	124.1	103.5
2. Professional	125.4	92.4	126.1	84.6	113.4	136.2	135.8	111.2	135.6
3. Associate professional and technical	108.3	104.9	118.1	94.1	105.5	120.0	92.3	114.0	100.9
4. Administrative and secretarial	91.2	118.8	103.0	94.5	105.8	100.3	84.3	81.6	101.2
5. Skilled trades	97.2	102.2	89.3	105.4	99.5	72.9	124.6	146.6	123.4
6. Caring, leisure and other service	89.2	170.5	116.4	106.4	97.9	53.6	87.4	78.2	92.8
7. Sales and customer service	84.1	37.1	101.8	96.9	95.4	82.9	65.9	82.2	68.3
8. Process, plant and machine operatives	82.5	91.8	90.9	89.4	92.5	68.3	87.4	119.0	102.5
9. Elementary	88.7	98.1	85.0	99.8	97.5	82.5	84.7	95.8	74.7

Productivity, 2012



Similarities



© Crown Copyright and the Controller of Her Majesty's Stationery Office. Reproduced by permission of the Controller of Her Majesty's Stationery Office. All rights reserved. Ordnance Survey Licence No. 100019200. This information is intended for general information only. It is not intended to be used for navigation. For more information on our products and services, please visit our website at www.ordnancesurvey.co.uk.

GVA per hour worked, 2012 (£)



Scale: 1:4,300,000 at A4



Produced by BOP
11 March 2014

© Crown Copyright and the Controller of Her Majesty's Stationery Office. Reproduced by permission of the Controller of Her Majesty's Stationery Office. All rights reserved. Ordnance Survey Licence No. 100019200. This information is intended for general information only. It is not intended to be used for navigation. For more information on our products and services, please visit our website at www.ordnancesurvey.co.uk.

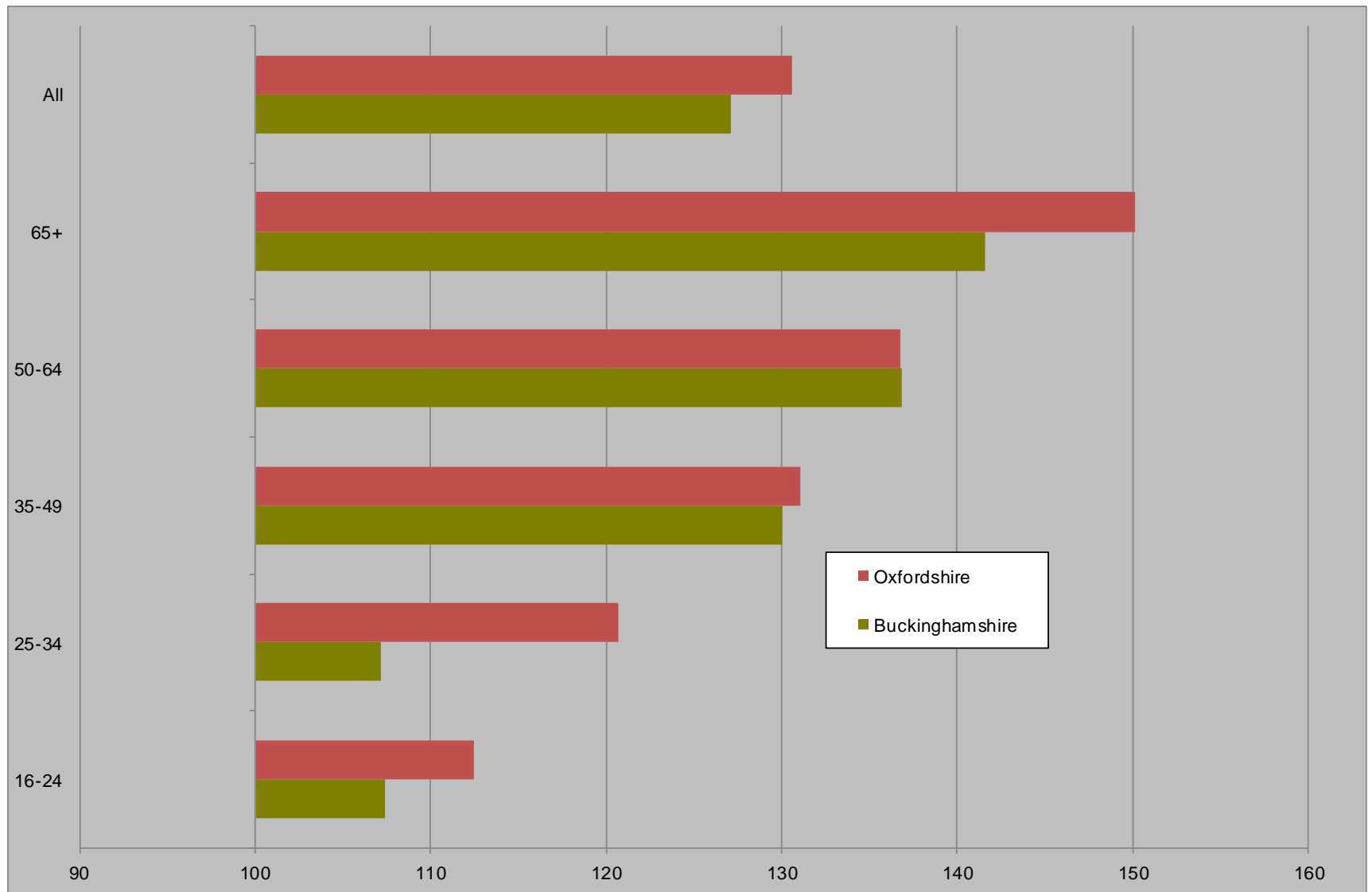


Scale: 1:4,300,000 at A4



Produced by BOP
21 August 2011

Educational attainment by age, 2011



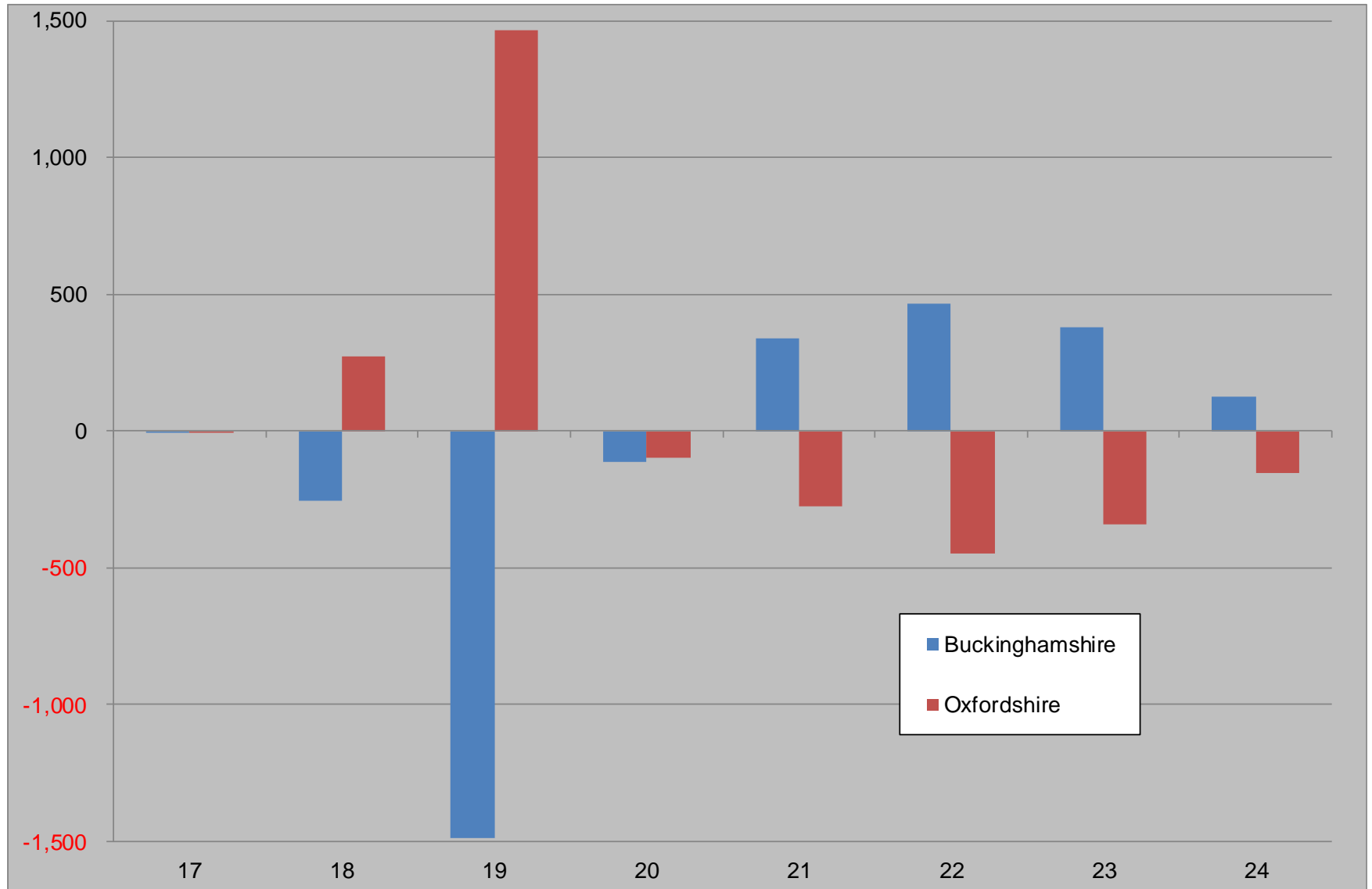
Schools performance, 2010/11

	Attend University			Oxbridge			Russell Group (including Oxbridge)		
	No.	%	Rank	No.	%	Rank	No.	%	Rank
BTVLEP	2,098	70.0	2	110	3.7	1	769	25.7	1
Thames Valley Berkshire	2,630	64.1	9	60	1.5	4	630	15.4	2
Hertfordshire	4,800	64.3	7	80	1.1	8	1,000	13.4	5
Enterprise M3	5,797	60.6	16	93	1.0	10	1,144	12.0	9
London	25,750	70.7	1	300	0.8	15	3,680	10.1	21
Coast to Capital	4,895	53.1	33	71	0.8	15	784	8.5	33
Oxfordshire	1,658	50.6	36	40	1.2	5	310	9.5	26
SEMLEP	5,682	59.9	17	62	0.7	21	895	9.4	27
Northamptonshire	2,150	55.6	29	20	0.5	28	290	7.5	35

Student populations, 2012/13

	Postgrads	Undergrads
University of Oxford	8,925	16,745
Oxford Brookes University	4,240	13,625
University of Buckingham	730	1,360
Buckinghamshire New University	1,005	8,200

Migration by age, 2013



First destinations, 2012/13

	First degree			Postgraduate		
	Total	Work	%	Total	Work	%
Oxford Brookes University	1,850	1,440	77.8	835	740	88.6
The University of Oxford	2,360	1,290	54.7	1,330	990	74.4
Buckinghamshire New University	845	620	73.4	135	120	88.9
The University of Buckingham	70	40	57.1	165	155	93.9
England	204,930	146,620	71.5	80,210	66,750	83.2

Working in place of study

	%
Buckinghamshire New University	36.9
The University of Buckingham	7.9
Oxford Brookes University	25.9
University of Oxford	9.9

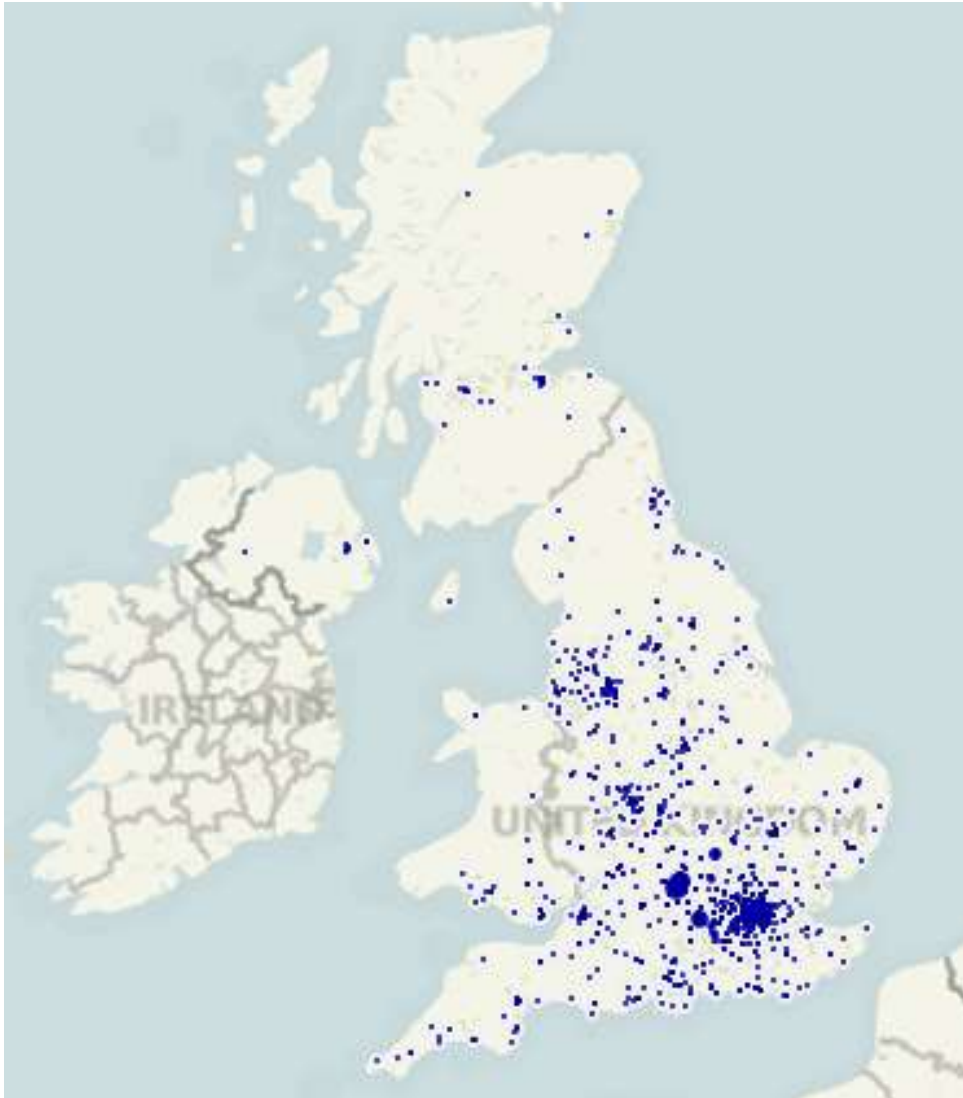
Employment destinations

	University of Oxford		Oxford Brookes		University of Buckingham		Bucks New University	
	No.	%	No.	%	No.	%	No.	%
In county	1,045	16.8	2,353	31.4	68	15.6	1,336	38.5
In the City	451	7.3	479	6.4	7	1.6	45	1.3
In London	2,175	35.0	1,393	18.6	70	16.1	1,103	29.2
Outside UK	998	16.1	193	2.6	60	13.8	145	4.2

In what occupations?

	University of Oxford		Oxford Brookes		University of Buckingham		Buckinghamshire New University	
	No.	%	No.	%	No.	%	No.	%
1. Managers, directors and senior officials	53	5.0	229	9.0	7	14.9	141	15.1
2. Professional	686	65.0	816	32.0	23	48.9	191	20.4
3. Associate professional and technical	151	14.3	852	33.4	7	14.9	266	28.4
4. Administrative and secretarial	93	8.8	178	7.0	2	4.3	56	6.0
5. Skilled trades	3	0.3	25	1.0	0	0.0	19	2.0
6. Caring, leisure and other service	24	2.3	212	8.3	3	6.4	76	8.1
7. Sales and customer service	26	2.5	136	5.3	4	8.5	128	13.7
8. Process, plant and machine operatives	4	0.4	12	0.5	0	0.0	6	0.6
9. Elementary	16	1.5	93	3.6	1	2.1	52	5.6
Total	1056		2553		47		935	

University of Oxford destinations



Concluding remarks

Data

Demand-led labour market at the sub-national level?

Serving national labour markets?

Role of LEPs